

FLEETSYS 7

FLEET MANAGEMENT
SYSTEMS

Fleetsys 7 ensures accurate and effective fuel management, by allowing the full control of either a single station or a network of stations allows you to control your fuel more effectively.



It allows you to control your fuel more effectively. It is a proven and updated technology, this paired with a fresh design and modern software result in the perfect system solution for efficient fleet management. A solution that has been designed for fleet and commercial companies of all sizes.

Reduce fuel expenses and create operational efficiencies through integration and automation.

End to end solution, from the pump to cloud management software.

RELIABILITY, FLEXIBILITY, AND
MODERN TECHNOLOGIES
MAKE THIS ALL POSSIBLE.



FLEETSYS 7 STANDALONE

FLEETSYS 7 PEDESTAL OPTION WITH AN APPEALING AND COMPACT DESIGN, BUILT WITH STAINLESS STEEL

- Control several pumps
- Intuitive operation and appealing UI



MAIN FEATURES

- Touch LCD Screen and backlit;
- With RFID or Mifare reader;
- Depending on the hardware interface it can connect to 4 or up to 8 fuel pumps;
- Online authorization.

SPECIFICATIONS

- Connection: ethernet, RS 232, USB, HDMI, Modbus;
- Optional thermal printer, 80 mm;
- Optional ATG connection;
- ID systems: cartões Mag Stripe, RFID.

TECHNICAL SPECIFICATIONS

CARD READER TERMINAL	
Temperature Limit	-20° to +55° without heating
Source Voltage	230 VAC
Power supply	100VA (standard configuration without heating)
Modem Ethernet / Wi-Fi	Optional in all version
Heating	Optional in DIT 1000 version

DIT VERSIONS INTEGRATED WITH THE FUEL PUMP

As a combination of robust fuel pump and modern fuel terminal Fleetsys 7 is a comprehensive solution to handle the identification and refueling process at your company filling station.

FLEETSYS 7 DIT 1000

FLEETSYS 7 DIT 1500



- Two form factors the P1000 and P1500 with Fleetsys DIT

- As single or double pump, with different pump capacities, for diesel and petrol.

MAIN BENEFITS

- Fuel pump and fleet management terminal in one single unit;
- High vehicle throughput;
- Flexible and powerful;
- Intuitive operation and appealing UI;
- Available as single and double nozzle.

FEATURES

- Touch LCD Screen and backlit;
- With RFID PREMIUM-MF RS232 (Mifare protocol) or RFID PREMIUM-EM RS232;
- Online authorization;
- Optional printer with heating in P1500 model;
- Optional heating.

TECHNICAL SPECIFICATIONS

CARD READER TERMINAL	
Construction	Frame: galvanised steel; double coated painting Housing: stainless steel Panels: aluminium; double coated painting
Admission	Suction: high performance compact gear pump RTF Pressure: submersible pump
Meter	Positive displacement meter PTF, with pulse generator and integrated electronic calibration
Filters	Reusable stainless steel, 100 µm mesh
Motor	Eexd, single/three-phase, 50/60 Hz w/ internal thermal protection
Calculator	Fleetsys 7 DIT
Hose	Ø16, 19, 21, 25 mm (EN1360/EN13483) (VR2 approved)
Nozzle	Automatic ZVA2 or others
Fuel types	Petrol diesel biodiesel adblue wo/heating1
Flow rates	10, 40, 80, 130 l/min up to 2 products/2 hoses
Certificates	ATEX
	-20° to +55° without heating

OPTIONS
Volume preset
Circuit breaker
Electronics head heating
Single-phase motor
Three-phase motor
Fleet management
Low temperature kit
Breakaway couplings
Custom nozzles and sleeves
Flexible riser connection
Stainless steel AISI304 image panel
Stainless steel AISI316 housing
Foundation frame
Custom corporate image
Hose mast (not available with LGP)

MANAGEMENT SOFTWARE

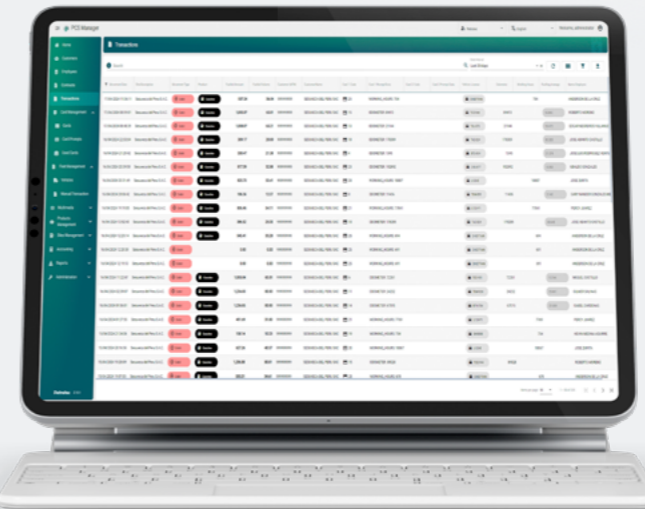
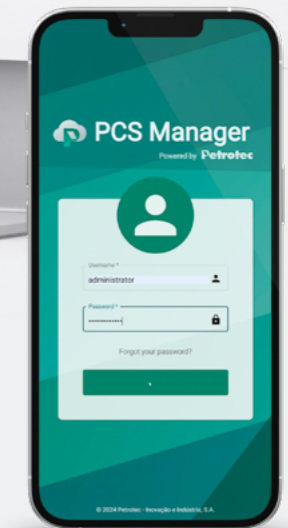
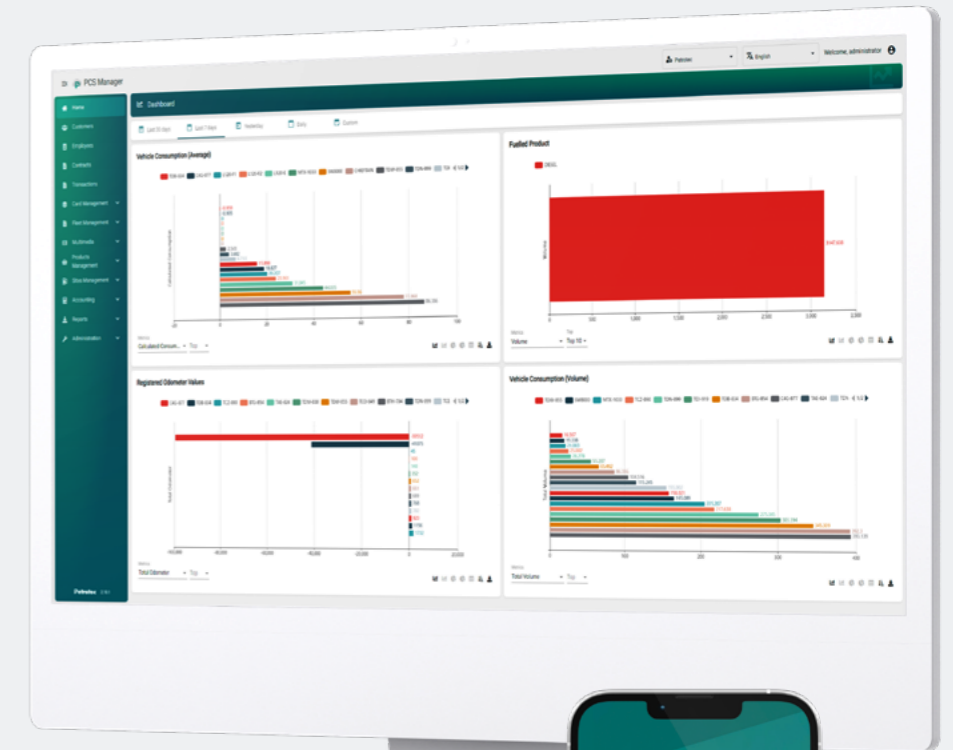
Enhance your system control and become even more efficient with Fleetsys 7 and PCS Fleet Manager!

Thanks to this new module, you can now completely manage and increase the profitability of your fleet.

Details such as authorization transactions for fuel supply, cards usage rules, reports or even the display can be fully customized to better communicate with drivers. Integrated fuel and fleet management allowing you to have complete and real time control of your fleet.

BENEFITS

- Designed for cloud (SaaS) deployment;
- Also available on-premises;
- Accessible via any web browser;
- Centralized management for one or more sites;
- Extremely easy to use;
- Customizable, configurable reports engine;
- Vehicle consumption deviations vs standard;
- Drivers' usage per vehicle, tracking the driving behavior;
- Quick spreadsheet export;
- Built-in API for data integration with fleet and/or finance software.



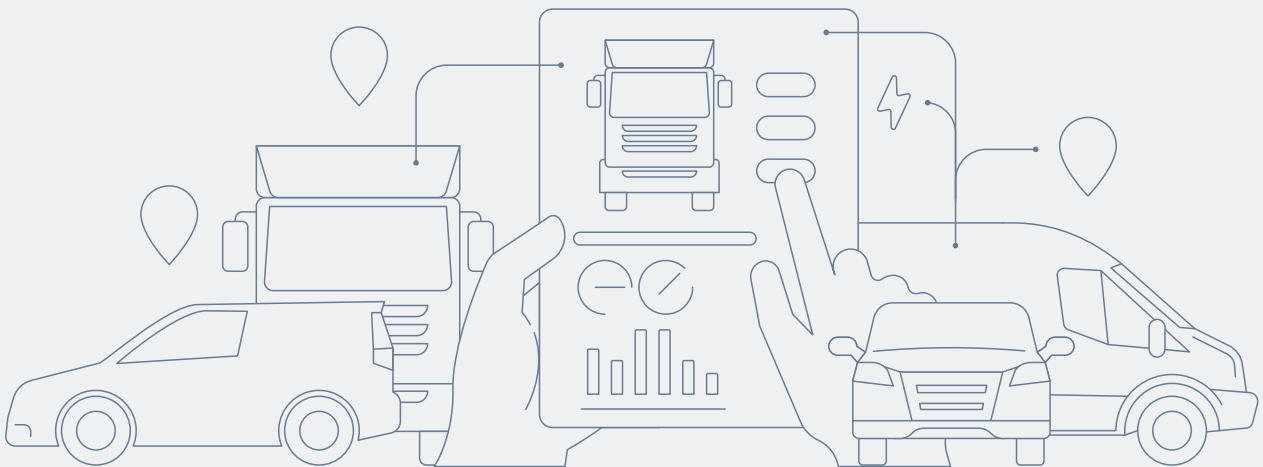
FEATURES

- List of authorized drivers and vehicles;
- Group all the vehicles according to a specific and personalized settings;
- Transaction limits and restrictions by card, by customer, etc;
- Real-time fuel transactions log;
- Vehicles odometer and engine hours;
- Additional configurable prompts for user input;
- cost center and activity code;
- Reporting by driver, vehicle, product, site, department, model, etc;
- Tank inventory management.

POSSIBLE SCENARIOS DIAGRAM



INNOVATION AT YOUR SERVICE



MOD.EN_CAT_FLEETSYS.7_PL.V1.0_13042026

petrotec.com



Opening
Mobility

© 2026 Petrotec Group. All rights reserved. Petrotec, the Petrotec logo, Pulse, Axon and combinations thereof are registered trademarks of Petrotec Group. Other names are informational and may be trademarks of their respective owners. Petrotec is continuously improving its products. Changes on the specifications may occur without prior notice. The imagery used may be indicative of style only. The available brochures are a guide and do not constitute an offer or contract.

HEADQUARTERS

Parque Industrial da Ponte, Pav. C2, S. João de Ponte, 4805-661 Guimarães - Portugal
T +351 235 479 300 | F +351 253 479 318
E-mail: hq@petrotec.com

