

MEDIA CONTENT MANAGER

INNOVATION
AT YOUR SERVICE

In contrast to conventional static or looping media, which can be laborious and expensive to update, our cloud-based solution allows for quick uploads, scheduling, and instant deployment in just minutes.

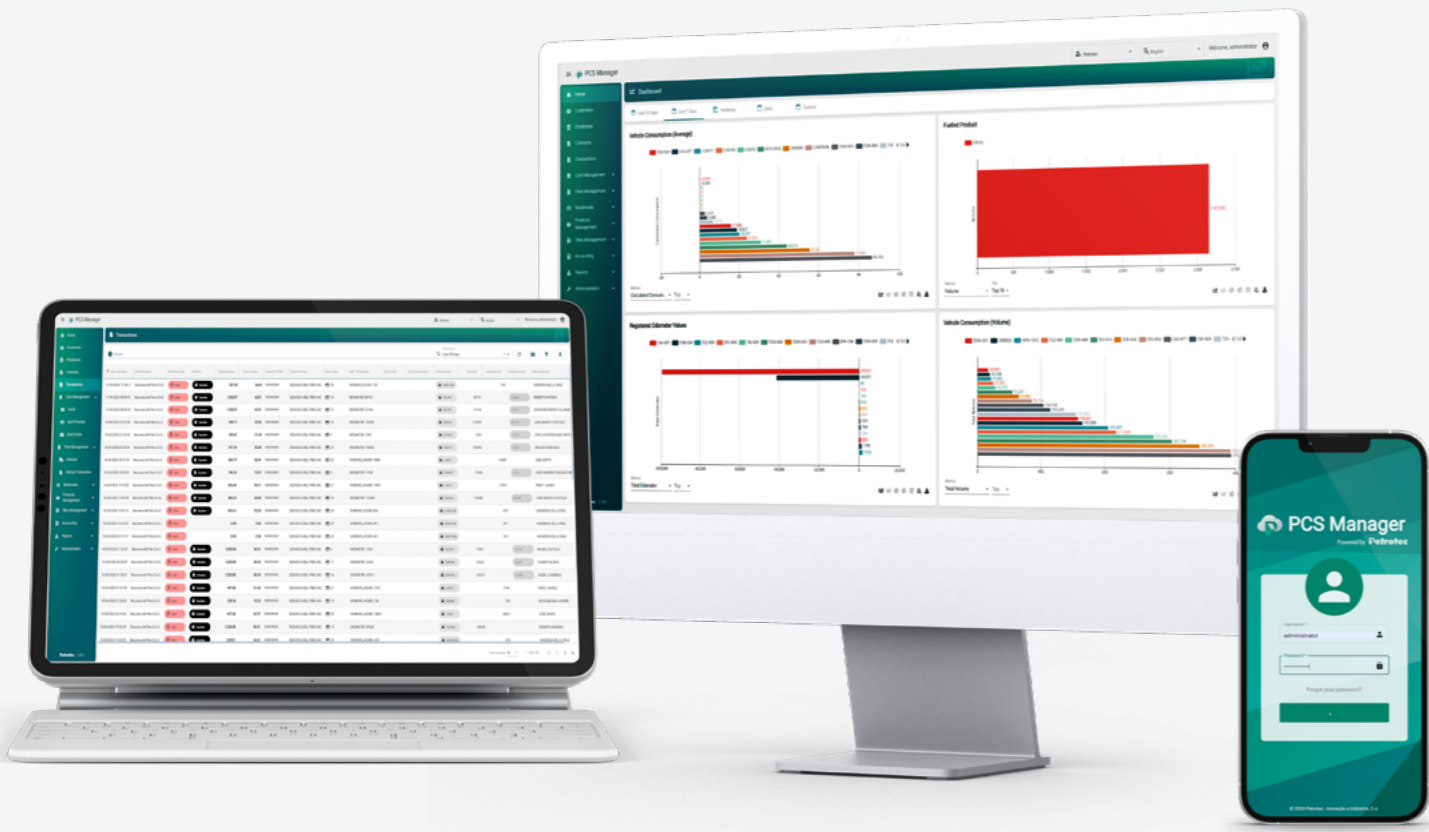


Whether it's at your neighborhood gas station or one halfway across the globe, this intuitive solution enables effortless deployment of advertisements and tailored messaging across individual fuel pumps, specific locations, or your entire network.

Petrotec Cloud CMS offers the perfect platform for showcasing in-store products, captivating customers' full focus as they refuel.

Scalable as your
needs grow.





NATIVE, AVAILABLE AS AN OPTIONAL ON AXON RANGE PUMP MODELS

BUILT-IN MEDIA CAPABILITIES WITH REMOTE MANAGEMENT AND SCHEDULING FEATURES

Deliver personalized experiences in content and targeted advertising, right at point of interaction, at the pump.

That turns a routine, disconnected action, time into an opportunity to drive brand awareness and publicity leveraging this media space.

CUSTOM CONTENT ON DISPENSER SCREENS CAN ALSO BE A TOOL FOR EDUCATING AND INFORMING CUSTOMERS

Multimedia fuel dispenser screens offer an excellent opportunity for cross-selling and upselling private label products

MAIN ADVANTAGES

Built-in media capabilities with remote management and scheduling features;

Take advantage of the multimedia screen to boost your brand promotion;

Leverage and monetize the advertising space by selling it to third parties or promote your own brand and products;

Easy Content Creation and Editing: intuitive and modern web application interfaces for creating and editing content, allowing users to publish new content quickly without needing technical expertise;

Centralized Content Management: all content is stored in a centralized location, application, making it easy to organize, search, and retrieve. This centralized approach ensures consistency and eliminates the need for managing content across multiple platforms and on individual devices.



AXON 5000



AXON 4000

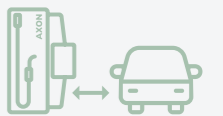


AXON H2

SPECIFICATIONS

- 13,3" standard screen
- Full multimedia 27" screen
- Wide screen, 16:9 format
- Full HD, 1920 x 1080
- High brightness screen, 1000 cd/m²
- Reinforced protective glass

ENSURE YOUR VEHICLE:



- is 1 meter away from the dispenser
- is parked
- has the engine turned off

AVAILABLE TO RETROFIT IN VARIOUS PROGRESS RANGE PUMP MODELS

SPECIFICATIONS AND FEATURES

SaaS, software licensing and delivery model, software is licensed on a subscription basis and is centrally hosted.

The uploaded videos, are always converted online and near real-time to a supported format if the user uploads and unsupported format.

Manage videos, playlists and devices;

Supports all video formats and images:

- MPEG
- AVI
- FLV
- MPEG-2
- MP4
- AIFF
- MOV

Smart, efficient content update.

User management.

Cloud / web-based platform.



LEVERAGE ALL THE MEDIA CAPABILITIES ACROSS ALL YOUR ESTATE WITH THE ABILITY TO RETROFIT MEDIA SCREENS IN AXON RANGE PUMPS BUT ALSO TO THE PROGRESS RANGE.

SPECIFICATIONS

- Bigger screen, 18,5"
- Wide screen, 16:9 format
- Full HD, 1920 x 1080
- High brightness screen, 1000 cd/m²
- Reinforced protective glass



P4000



P5000

ARCHITECTURE AND SUPPORTED DEVICES



IN-STORE MEDIA



PULSE POS
COSTUMER DISPLAY



PROGRESS



OPT



AXON



AXON H2



MOD_EN_CAT_CMS_PLV01_23032026