

# AXON 2000

DISPENSING  
SOLUTIONS

## Compact footprint. The greatest performance.

With outstanding electronics and hydraulics and a sleek design built by premium construction and materials, the AXON A2000 is the right choice for those who are looking for high performance but must deal with the limited space available at the forecourt.



Maximum efficiency aligned with a great user experience.

Hose retraction system and lifting solution for an easy handling

Solid Construction Frame

Touchscreen with a modern Look and Feel

Easier Maintenance and Serviceability

The A2000 is a multitasking and versatile model. The lateral hoses allow easy access to the 2 products at the same time.

Up to 130l / min

Up to 2 Fuel Grades

Multiple Fuel Types

Up to 2 hoses

Certificate: ATEX | MID

< 1000 kg (+/- 5%) kg

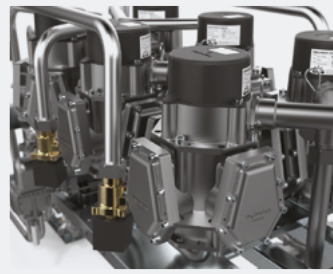
2200 x 800 x 800 mm





## DURABLE AND LARGER DISPLAY

- Crisp digits under any lighting conditions
- Maximum flexibility with minimalist design
- Intuitive touchscreen



## ENHANCED HIDRAULICS

- Aluminum alloy obtained through injection under pressure
- Inlet suction lines aligned for the entire range
- Meter with electronic calibration
- P-Flux connected to electronics for error management
- Quick coupling connection for the meter

## TECHNICAL SPECIFICATIONS

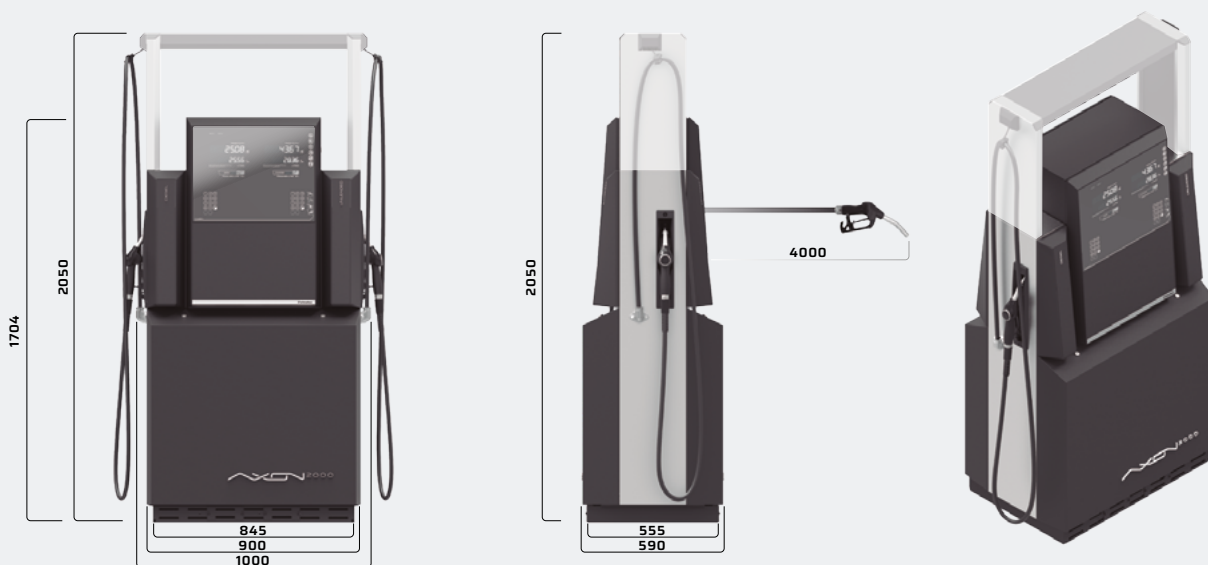
<b>Admission</b>	Suction: High Performance Compact Gear Pump PPS Pressure: Submersible Pump
<b>Meter</b>	Positive displacement meter, with pulse generator
<b>Filters</b>	Reusable stainless steel, 100 µm mesh, standard area of 120 cm <sup>2</sup> , optionally available with 260 cm <sup>2</sup>
<b>Spin-On Filters <sup>(1)</sup></b>	Feature providing additional filtration capability for our equipment. 10 or 30 µm available
<b>Motor</b>	Exd, single/three-phase, 50/60 Hz w/ internal thermal protection
<b>Calculator</b>	iMC
<b>Hose</b>	Ø16, 19, 21, 25 mm (EN1360/EN13483) (VR2 approved)
<b>Nozzle</b>	Automatic ZVA2 or others
<b>Flow Rates</b>	10, 40, 60, 80, 130 l/min
<b>Comm Protocols</b>	Petrotec, EP55, Pulse Interface, ER3, IFSF IP, IFSF Lon, HDX 485 and HDX 2WI (Gilbarco), Dunclare, Pumalan, HDX IP (Tesco)
<b>Display</b>	Touchscreen • Tempered Glass • Volume and amount preset

<b>Options</b>	Speed Selector Voice Module Electro-mechanical totalizers Volume and amount preset Circuit breaker Main safety switch (LPG) Electronics head heating Vapour recovery stage II Vapour recovery with monitoring Automatic temperature compensation Single / Three Phase Motor Satellite ready (1 per side) Breakaway couplings Custom nozzles and Satellite Flexible riser connection Foundation frame Custom corporate image Stainless steel AISI316 housing Overground Tank Option
<b>Safety</b>	Emergency button Panel access swith detection Log Recorder*

(1) Only available for Pressure version

(\*) Only available with select protocols HDX, IFS & Pumalan

## DIMENSIONS



MOD.EN\_CAT\_AXON\_2000\_PLV10.13042026

petrotec.com



Opening Mobility

© 2026 Petrotec Group All rights reserved. Petrotec, the Petrotec logo, Pulse, Axon and combinations thereof are registered trademarks of Petrotec Group. Other names are informational and may be trademarks of their respective owners. Petrotec is continuously improving its products. Changes on the specifications may occur without prior notice. The imagery used may be indicative of style only. The available brochures are a guide and do not constitute an offer or contract.

### HEADQUARTERS

Parque Industrial da Ponte, Pav. C2, S. João de Ponte, 4805-661 Guimarães - Portugal  
T +351 235 479 300 | F +351 253 479 318  
E-mail: hq@petrotec.com

